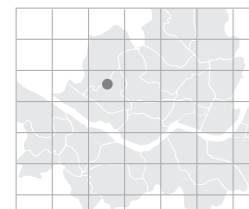


Grand Hilton Seoul, set against the backdrop of Mt. Baekryun, has succeeded in offering guests highly professional services and superb facilities in the most beautiful natural surroundings of any of Seoul's major hotels. The Grand Hilton Seoul, with its modern convention center, is located 45 minutes by car from Incheon International Airport and 15 minutes from the city center by courtesy bus. It has 396 comfortable and tastefully decorated guest rooms and an executive floor.

- Hotel Grade: 5 Star
- Total Area(m²): 78,193 m²
- No. of Meeting Rooms: 12
- No. of Guest Rooms: 396
- Year of Establishment: 1988
- From Incheon Int'l Airport: 45min./ 55.825km
- Subway Station: Line #3, Hongje Station



> Map: E-5



Special Features Grand Hilton Seoul is the ideal venue because of its peaceful locate, yet it offers the convenience of being just a 15-minute drive away from Seoul's City Hall and it is also the closest super deluxe hotel to the Incheon International Airport. Occupying the entire 4th floor of the Convention Center, the Convention Hall offers a contemporary atmosphere combined with state-of-the-art audio visual facilities. Capable of accommodating up to 2,500 guests, the business-oriented venue is perfectly suited for international events, workshop and seminars. The pillar-less space is flexible enough to provide six different configurations – Concert, Fashion Show, Banquet, Classroom.

Major Events ★ Society of Stem Cell Research – AUG. 2015 ★ Society of Family Medicine – OCT. 2015 ★ MISSHA Launching Event – AUG. 2016 ★ Microsoft Cloud Roadshow – MAR. 2016 ★ CHANEL – DEC. 2016 ★ KSN(Korean Society of Nephrology) – MAY. 2017 ★ KOA(Korean Orthopaedic Association) – OCT. 2017 ★ KDDW(Korea Digestive Disease Week) – NOV. 2017

MEETING & BANQUET FACILITIES(MAIN BUILDING)

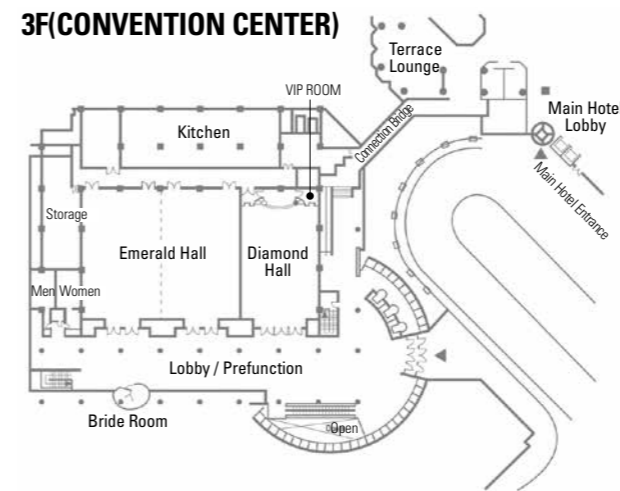
Name of Hall	Location	Size (m ²)	Capacity				Height (m)
			Theater	Classroom	Cocktail	Banquet	
Grand Ballroom	2F	837	1,200	600	1,500	600	7.0
Flamingo	2F	160	100	70	120	70	3.5
Skylark	2F	105	60	40	100	50	3.5
Swan	2F	84	80	50	100	50	3.5
White Heron	2F	84	80	50	100	50	3.5
Crane	2F	77	70	40	90	40	3.5
Peacock	2F	88	80	50	100	50	3.5
Board Room	2F	48	30	20	40	20	3.5

CONVENTION CENTER

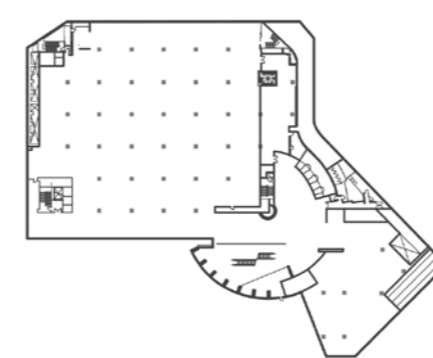
Name of Hall	Location	Size (m ²)	Capacity				Height (m)
			Theater	Classroom	Cocktail	Banquet	
Convention Hall	4F	1,536	2,200	1,218	2,500	1,152	7
Emerald Hall	3F	804	1,080	660	1,200	616	4
Diamond Hall	3F	411	440	300	500	240	4
Exhibition Hall A	1F	2,778	3,000	1,650	3,500	1,500	2.84
Exhibition Hall B	1F	663	500	330	800	300	2.84

※ The Main Building is linked with the Convention Center by bridge.

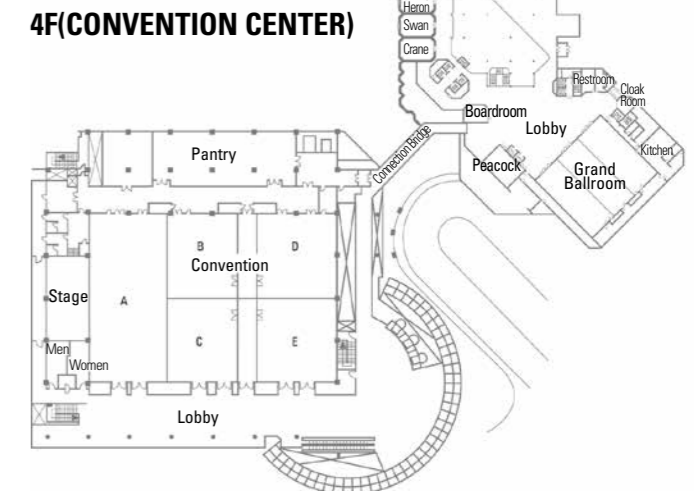
3F(CONVENTION CENTER)



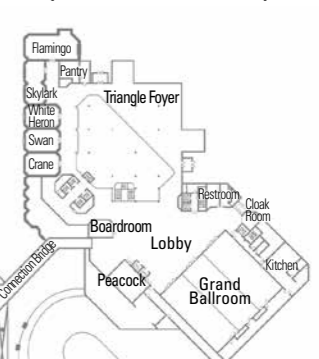
1F(CONVENTION CENTER)



4F(CONVENTION CENTER)



2F(MAIN BUILDING)



GUEST ROOMS

Room Type	Rooms
Deluxe(King)	91
Deluxe(Twin)	144
Korean-style Ondol Deluxe	2
Superior(King)	23
Superior(Twin)	25
Executive(King)	84
Executive(Twin)	8
Deluxe Suites	7
Junior Suites	8
Korean-style Ondol Suite	1
Executive Suite	2
Presidential Suite	1
Total	396

FOOD & BEVERAGE

Name of Facility	Location	Cuisine	Capacity
Buffet Restaurant	LL	International Buffet	210
Atrium Café	LL	Pasta, Pizza, Salad Bar, Korean Food	90
Alpine Deli	LL	Bread, Cake, Wine	16
Atrium	LL	Juice, Coffee	35
Yeohyang	1F	Chinese	128
Terrace Lounge	1F	Beverages & Live Entertainment	144
Member's Club	1F	Cigar Lounge with Fine Spirits	47

Nearby Attractions

- **Traditional Experiences:** Gyeongbokgung Palace, Gyeonghuigung Palace, Jongmyo Shrine, Bukchon Hanok Village
- **Entertainment:** Jeongdong Theater, Sejong Center for the Performing Arts
- **Art&Museums:** Seodaemun Prison History Hall, Seoul Museum of History, National Palace Museum of Korea
- **Popular Streets:** Samcheong-dong, Hongik Univ. Street